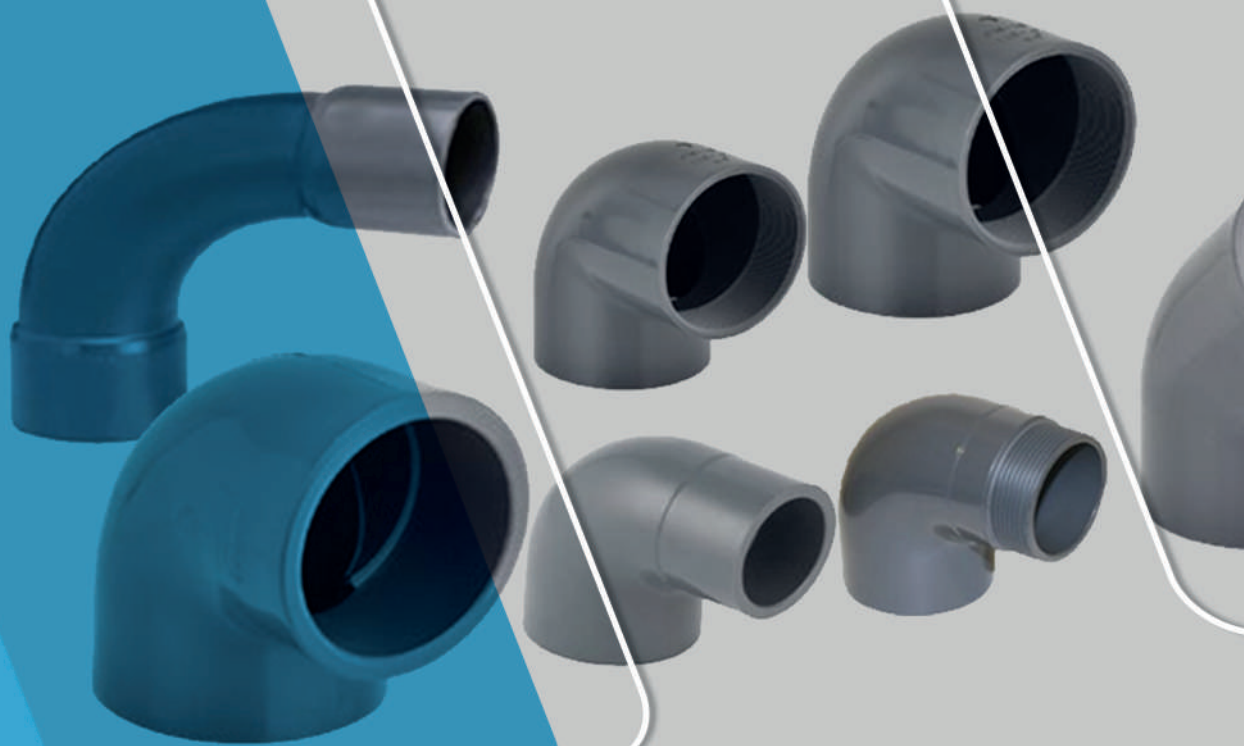


**CASTANB**



**UH-PVC**  
**SOLVENT CEMENT**  
**FITTINGS**



# UH-PVC 90° SOLVENT CEMENT ELBOW



Kod/Code:	DN	Çap/ Dia ( mm )	Basınç/PN	Ambalaj Adedi/ Packing Qty
SCE9020	15	20	16	400
SCE9025	20	25	16	200
SCE9032	25	32	16	100
SCE9040	32	40	16	60
SCE9050	40	50	16	80
SCE9063	50	63	16	60
SCE9075	65	75	16	40
SCE9090	80	90	16	25
SCE90110	100	110	16	15
SCE90125	110	125	16	8
SCE90140	125	140	16	6
SCE90160	150	160	16	4
SCE90200	175	200	16	2
SCE90225	200	225	16	1
SCE90250	250	250	16	1
SCE90280	250	280	16	1
SCE90315	300	315	16	1
SCE90355	350	355	16	1
SCE90400	400	400	16	1

# UH-PVC 90° PRO-FIT ELBOW



Kod/Code:	DN	Çap/ Dia ( mm )	Basınç/PN	Ambalaj Adedi/ Packing Qty
PFE50	40	50	16	80
PFE63	50	63	16	40

# UH-PVC 90° ONE SIDE FEMALE THREADED ELBOW



Kod/Code:	DN	Çap/ Dia ( mm )	Basınç/PN	Ambalaj Adedi/ Packing Qty
OSFTE15	15	20 x 1/2"	16	303
OSFTE20	20	25 x 3/4"	16	200
OSFTE25	25	32 x 1"	16	100
OSFTE32	32	40 x 1 1/4"	16	60
OSFTE40	40	50 x 1 1/2"	16	80
OSFTE50	50	63 x 2"	16	60.0
OSFTE65	65	75 x 2 1/2"	16	40
OSFTE80	80	90 x 3"	16	25
OSFTE100	100	110 x 4"	16	15

## H-PVC 90° PRO-FIT MALE THREADED ELBOW



Kod/Code:	DN	d-Rp Inch	Basıncı/PN	Ambalaj Adedi/ Packing Qty
PFMTE50		1 1/2"	10	80
PFMTE63		2"	10	40

## UH-PVC 90° BOTH SIDES FEMALE THREADED ELBOW



Kod/Code:	DN	d-Rp Inch	Basıncı/PN	Ambalaj Adedi/ Packing Qty
BSFTE15	15	1/2"	16	303
BSFTE20	20	3/4"	16	200
BSFTE25	25	1"	16	100
BSFTE32	32	1 1/4"	16	60
BSFTE40	40	1 1/2"	16	80
BSFTE50	50	2"	16	60.0
BSFTE65	65	2 1/2"	16	40
BSFTE80	80	3"	16	25
BSFTE100	100	4"	16	15

## UH-PVC 90° SOLVENT CEMENT SHORT BEND



Kod/Code:	DN	d-Rp Inch	Basıncı/PN	Ambalaj Adedi/ Packing Qty
SCSB50	50		16	25
SCSB63	63		16	20
SCSB75	75		16	15
SCSB90	90		16	10
SCSB110	110		16	5

## UH-PVC 45° SOLVENT CEMENT ELBOW



Kod/Code:	DN	Çap/ Dia (mm)	Basıncı/PN	Ambalaj Adedi/ Packing Qty
SCE4520	15	20	16	400
SCE4525	20	25	16	200
SCE4532	25	32	16	100
SCE4540	32	40	16	75
SCE4550	40	50	16	80
SCE4563	50	63	16	50
SCE4575	65	75	16	40
SCE4590	80	90	16	25
SCE45110	100	110	16	18
SCE45125	10	125	16	8
SCE45140	125	140	16	6
SCE45160	150	160	16	5
SCE45200	175	200	10	2
SCE45225	200	225	10	2
SCE45250	250	250	10	2
SCE45280	250	280	10	1
SCE45315	300	315	10	1
SCE45355	350	355	10	1
SCE45400	400	400	10	1

# UH-PVC SOLVENT CEMENT TEE



Kod/Code:	DN	Çap/ Dia ( mm )	Basıncı/PN	Ambalaj Adedi/ Packing Qty
SCTE20	15	20	16	200
SCTE25	20	25	16	100
SCTE32	25	32	16	60
SCTE40	32	40	16	90
SCTE50	40	50	16	50
SCTE63	50	63	16	50
SCTE75	65	75	16	30
SCTE90	80	90	16	18
SCTE110	100	110	16	10
SCTE125	110	125	16	6
SCTE140	125	140	16	4
SCTE160	150	160	16	3
SCTE200	175	200	16	1
SCTE225	200	225	10	1
SCTE250	250	250	10	1
SCTE280	250	280	10	1
SCTE315	300	315	10	1
SCTE355	350	355	10	1
SCTE400	400	400	10	1

# UH-PVC 45° ONE SIDE FEMALE THREADED ELBOW



Kod/Code:	DN	d-Rp Inch	Basıncı/PN	Ambalaj Adedi/ Packing Qty
45OSFTE15	15	20 * 1/2"	16	300
45OSFTE20	20	25 * 3/4"	16	200
45OSFTE25	25	32 * 1"	16	100
45OSFTE32	32	40 * 1 1/4"	16	60
45OSFTE40	40	50 * 1 1/2"	16	80
45OSFTE50	50	63 * 2"	16	60.0
45OSFTE63	63	75 * 2 1/2"	16	40
45OSFTE80	80	90 * 3"	16	25
45OSFTE100	100	110 * 4"	16	18

# UH-PVC 45° SOLVENT CEMENT ELBOW



Kod/Code:	DN	d-Rp Inch	Basıncı/PN	Çap/ Dia ( mm )	Ambalaj Adedi/ Packing Qty
OSFTTE15	15	1/2"	16	20	300
OSFTTE20	20	3/4"	16	25	200
OSFTTE25	25	1"	16	32	100
OSFTTE32	32	1 1/4"	16	40	60
OSFTTE40	40	1 1/2"	16	50	80
OSFTTE50	50	2"	16	63	60.0
OSFTTE63	63	2 1/2"	16	75	40
OSFTTE80	80	3"	16	90	25
OSFTTE100	100	4"	16	110	18

# UH-PVC 45° BOTH SIDES FEMALE THREADED ELBOW



Kod/Code:	DN	d-Rp Inch	Basınç/PN	Çap/Dia ( mm )	Ambalaj Adedi/ Packing Qty
45BSFTE15	15	1/2"	16		300
45BSFTE20	20	3/4"	16		200
45BSFTE25	25	1"	16		100
45BSFTE32	32	1 1/4"	16		60
45BSFTE40	40	1 1/2"	16		80
45BSFTE50	50	2"	16		60
45BSFTE63	63	2 1/2"	16		40
45BSFTE80	80	3"	16		25
45BSFTE100	100	4"	16		18

# UH-PVC 45° ONE SIDE FEMALE THREADED ELBOW



Kod/Code:	DN	d-Rp Inch	Basınç/PN	Çap/Dia ( mm )	Ambalaj Adedi/ Packing Qty
3FTTE15	15	1/2"	16		200
3FTTE20	20	3/4"	16		100
3FTTE25	25	1"	16		60
3FTTE32	32	1 1/4"	16		90
3FTTE40	40	1 1/2"	16		50
3FTTE50	50	2"	16		50
3FTTE65	65	2 1/2"	16		30
3FTTE80	80	3"	16		18
3FTTE100	100	4"	16		10

# UH-PVC 45° SOLVENT CEMENT ELBOW



Kod/Code:	Çap/Dia ( mm ) 1	Çap/Dia ( mm ) 2	Basınç/PN	Ambalaj Adedi/ Packing Qty
SCRT3220	32	20	16	50
SCRT3225	32	25	16	100
SCRT3250	32	50	16	80
SCRT4020	40	20	16	48
SCRT4025	40	25	16	48
SCRT4032	40	32	16	48
SCRT5020	50	20	16	75
SCRT5025	50	25	16	75
SCRT5032	50	32	16	75
SCRT5040	50	40	16	50
SCRT6325	63	25	16	40
SCRT6332	63	32	16	30
SCRT6340	63	40	16	30
SCRT6350	63	50	16	30
SCRT7532	75	32	16	30
SCRT7540	75	40	16	30
SCRT7550	75	50	16	30
SCRT7563	75	63	16	30
SCRT9032	90	32	16	35
SCRT9040	90	40	16	35
SCRT9050	90	50	16	35
SCRT9063	90	63	16	35
SCRT9075	90	75	16	25
SCRT1132	110	32	16	22
SCRT1140	110	40	16	22
SCRT1150	110	50	16	22
SCRT1163	110	63	16	22
SCRT1175	110	75	16	10
SCRT1190	110	90	16	11
SCRT1263	125	63	16	10
SCRT1275	125	75	16	10
SCRT1290	125	90	16	8
SCRT1211	125	110	16	8

FOR SIZE 140-225

# UH-PVC ONE SIDE FEMALE THREADED REDUCING TEE



Kod/Code:	Çap/ Dia ( mm )	d-Rp Inch	Basınç/PN	DN ( mm )	Ambalaj Adedi/ Packing Qty
OSFTRTE501	50	1"	16	40	75
OSFTRTE631	63	1"	16	50	40
OSFTRTE63112	63	1 1/2"	16	50	30
OSFTRTE752	75	2"	16	65	35
OSFTRTE902	90	2"	16	75	25
OSFTRTE90212	90	2 1/2"	16	75	22
OSFTRTE112	110	2"	16	100	10
OSFTRTE11212	110	2 1/2"	16	100	11
OSFTRTE113	110	3"	16	100	10

# UH-PVC 45° SOLVENT SINGLE BRANCH TEE



Kod/Code:	Çap/ Dia ( mm )	d-Rp Inch	Basınç/PN	DN ( mm )	Ambalaj Adedi/ Packing Qty
45SSBTE20	20		16		
45SSBTE25	25		16		
45SSBTE32	32		16		
45SSBTE40	40		16		
45SSBTE50	50		16		20
45SSBTE63	63		16		20
45SSBTE75	75		16		25
45SSBTE90	90		16		20
45SSBTE11	110		16		8

# UH-PVC 90° SOLVENT CEMENT CROSS



Kod/Code:	Çap/ Dia ( mm )	d-Rp Inch	Basınç/PN	DN ( mm )	Ambalaj Adedi/ Packing Qty
90SCC32	32		16	25	110
90SCC40	40		16	32	70
90SCC50	50		16	40	35
90SCC63	63		16	50	40
90SCC75	75		16	65	20
90SCC90	90		16	80	12
90SCC11	110		16	100	7
90SCC12	125		16	110	4
90SCC14	140		16	125	4
90SCC16	160		16	150	3
90SCC20	200		16	175	1
90SCC22	225		16	200	1
90SCC25	250		16	250	1
90SCC28	280		16	250	1
90SCC31	315		16	300	1
90SCC35	355		16	350	1
90SCC40	400		16	400	1

# UH-PVC DOUBLE SOCKET



Kod/Code:	Çap/ Dia ( mm )	d-Rp Inch	Basınç/PN	DN ( mm )	Ambalaj Adedi/ Packing Qty
DS16	16		16	12	500
DS20	20		16	15	480
DS25	25		16	20	250
DS32	32		16	25	125
DS40	40		16	32	140
DS50	50		16	40	70
DS63	63		16	50	120
DS75	75		16	65	90
DS90	90		16	80	40
DS11	110		16	100	28
DS12	125		16	110	22
DS14	140		16	125	16
DS16	160		16	150	12
DS20	200		16	175	3
DS22	225		16	200	2
DS25	250		10	250	1
DS28	280		10	250	1
DS31	315		10	300	1
DS35	355		10	350	1
DS40	400		10	400	1

## UH-PVC BOTH SIDE FEMALE THREADED REDUCER ADAPTOR



Kod/Code:	Çap/ Dia ( mm )	d-Rp Inch	Basınç/PN	DN ( mm )	Ambalaj Adedi/ Packing Qty
BSFTRA25	25	1/2"	16		450
BSFTRA32	32	3/4"	16		240
BSFTRA40	40	1"	16		180
BSFTRA50	50	1 1/4"	16		80
BSFTRA63	63	1 1/2"	16		100
BSFTRA752	75	2"	16		75
BSFTRA75212	75	2 1/2"	16		75
BSFTRA90	90	3"	16		60
BSFTRA11	110	4"	16		18

## UH-PVC ONE SIDE FEMALE THREADED REDUCER ADAPTOR



Kod/Code:	Çap/ Dia ( mm )	d-Rp Inch	Basınç/PN	DN ( mm )	Ambalaj Adedi/ Packing Qty
OSFTREA20	20	1/2"	16		450
OSFTREA25	25	3/4"	16		240
OSFTREA32	32	1"	16		180
OSFTREA40	40	1 1/4"	16		80
OSFTREA50	50	1 1/2"	16		100
OSFTREA63	63	2"	16		75
OSFTREA75	75	2 1/2"	16		75
OSFTREA90	90	3"	16		60
OSFTREA11	110	4"	16		18
OSFTREA12	125	4 1/2"	16		22
OSFTREA14	140	5"	16		16
OSFTREA16	160	6"	10		12
OSFTREA20	200	7"	10		4
OSFTREA22	225	8"	10		2
OSFTREA25	250	9"	10		2



# UH-PVC FEMALE OTHER SIDE MALE THREADED ADAPTOR



Kod/Code:	d-Rp Inch 1	d-Rp Inch 2	Basınç/PN	DN ( mm )	Ambalaj Adedi/ Packing Qty
FOSMTA114	1 1/4"	1 1/2"	16		80
FOSMTA112	1 1/2"	1 1/2"	16		150
FOSMTA1122	1 1/2"	2"	16		95
FOSMTA2	2"	2"	16		160
FOSMTA2212	2"	2 1/2"	16		75
FOSMTA2123	2 1/2"	3"	16		75
FOSMTA4	4"	4 1/2"	16		18

# UH-PVC BOTH SIDE FEMALE THREADED REDUCER ADAPTOR



Kod/Code:	Çap/ Dia ( mm )	d-Rp Inch 2	Basınç/PN	DN ( mm )	Ambalaj Adedi/ Packing Qty
OSFTREA32	32	3/4"	16		550
OSFTREA40	40	1"	16		250
OSFTREA50	50	1 1/4"	16		180
OSFTREA63	63	1 1/2"	16		120

# UH-PVC ONE SIDE MALE THREADED REDUCER ADAPTOR



Kod/Code:	Çap/ Dia ( mm )	d-Rp Inch	Basınç/PN	DN ( mm )	Ambalaj Adedi/ Packing Qty
OSMTREA20	20	1/2"	16		400
OSMTREA25	25	3/4"	16		250
OSMTREA32	32	1"	16		160
OSMTREA40	40	1 1/4"	16		120
OSMTREA50	50	1 1/2"	16		150
OSMTREA63	63	2"	16		100
OSMTREA75	75	2 1/2"	16		48
OSMTREA90	90	3"	16		27
OSMTREA11	110	4"	16		26

# UH-PVC MALE THREADED ADAPTOR (Long Type)



Kod/Code:	Çap/ Dia ( mm )	d-Rp Inch	Basınç/PN	DN ( mm )	Ambalaj Adedi/ Packing Qty
MTAL50	50	1 1/2"	16		125
MTAL63	63	2"	16		70
MTAL75	75	2 1/2"	16		80
MTAL90	90	3"	16		40
MTAL11	110	4"	16		30
MTAL12	125	4 1/2"	16		14
MTAL14	140	5"	16		12
MTAL16	160	6"	16		8
MTAL20	200	7"	10		6



# UH-PVC MALE THREADED ADAPTOR SOLVENT CEMENTED



Kod/Code:	Çap/ Dia ( mm )	d-Rp Inch	Basınç/PN	DN ( mm )	Ambalaj Adedi/ Packing Qty
MTASC50	50	1 1/2"	16		150
MTASC63	63	2"	16		140

# UH-PVC BOTH SIDE MALE THREADED REDUCER ADAPTOR



Kod/Code:	d-Rp Inch 1	d-Rp Inch 2	Basınç/PN	DN ( mm )	Ambalaj Adedi/ Packing Qty
BSMTREA34	3/4"	1/2"	16		500
BSMTREA1	1"	3/4"	16		300
BSMTREA114	1 1/4"	1"	16		179
BSMTREA112	1 1/2"	1"	16		150
BSMTREA112114	1 1/2"	1 1/4"	16		149
BSMTREA21	2"	1"	16		70
BSMTREA2114	2"	1 1/4"	16		105
BSMTREA2112	2"	1 1/2"	16		70
BSMTREA212114	2 1/2"	1 1/4"	16		75
BSMTREA2122	2 1/2"	2"	16		105
BSMTREA32	3"	2"	16		35
BSMTREA3212	3"	2 1/2"	16		48
BSMTREA4212	4"	2 1/2"	16		35
BSMTREA42	4"	2"	16		35
BSMTREA43	4"	3"	16		45

# UH-PVC ONE SIDE FEMALE OTHER SIDE MALE THREADED REDUCER ADAPTOR



Kod/Code:	Çap/ Dia ( mm )	d-Rp Inch	Basınç/PN	DN ( mm )	Ambalaj Adedi/ Packing Qty
OSFESMTREA25	25	1/2"	16		550
OSFESMTREA32	32	3/4"	16		250
OSFESMTREA40	40	1"	16		180
OSFESMTREA63	63	1 1/2"	16		120

# UH-PVC BARREL NİPEL



Kod/Code:	Çap/ Dia ( mm )	d-Rp Inch	Basınç/PN	DN ( mm )	Ambalaj Adedi/ Packing Qty
PBN112		1 1/2"	16		800
PBN34		3/4"	16		500
PNB1		1"	16		250
PBN114		1 1/4"	16		180
PNBN11216		1 1/2"	16		150
PBN2		2"	16		120
PBN212		2 1/2"	16		75
PBN34		3"	16		70
PBN4		4"	16		45
PBN412		4 1/2"	16		20
PBN5		5"	16		10
PBN6		6"	16		10
PBN7		7"	0		4

# UH-PVC ONE SIDE MALE THREADED HOSE ADAPTOR



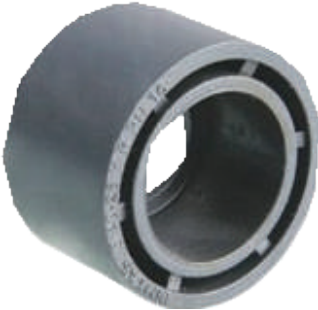
Kod/Code:	Çap/ Dia (mm)	d-Rp Inch	Basınç/PN	DN (mm)	Ambalaj Adedi/ Packing Qty
MTHA20	20		16		400
MTHA25	25		16		225
MTHA32	32		16		140
MTHA40	40		16		150
MTHA50	50		16		125
MTHA63	63		16		70
MTHA75	75		16		0
MTHA90	90		16		40
MTHA11	110		16		30
MTHA12	125		16		20
MTHA14	140		16		12
MTHA16	160		16		8

## UH-PVC SOLVENT CEMENT HOSE ADAPTOR (External Connection)



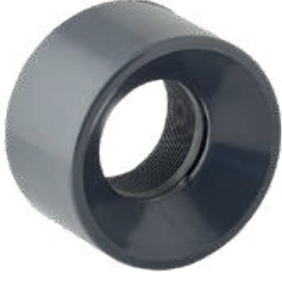
Kod/Code:	Çap/ Dia (mm)	d-Rp Inch	Basınç/PN	DN (mm)	Ambalaj Adedi/ Packing Qty
SCHA20	20	1/2"	16		400
SCHA25	25	3/4"	16		225
SCCHA32	32	1"	16		140
SCHA40	40	1 1/4"	16		150
SCHA50	50	1 1/2"	16		125
SCHA63	63	2"	16		70

## UH-PVC SOLVENT CEMENT REDUCER



Kod/Code:	Çap/ Dia (mm) 1	Çap/ Dia (mm) 2	Basınç/PN	DN (mm)	Ambalaj Adedi/ Packing Qty
SCRE2016	20	16	16		1500
SCRE2520	25	20	16		1000
SCRE3220	32	20	16		500
SCRE3225	32	25	16		500
SCRE4020	40	20	16		300
SCRE4025	40	25	16		300
SCRE4032	40	32	16		300
SCRE5032	50	32	16		200
SCRE5040	50	40	16		200
SCRE6332	63	32	16		100
SCRE6340	63	40	16		100
SCRE6350	63	50	16		100
SCRE7540	75	40	16		60
SCRE7550	75	50	16		60
SCRE7563	75	63	16		60
SCRE9032	90	32	16		65
SCRE9050	90	50	16		70
SCRE9063	90	63	16		70
SCRE9075	90	75	16		70
SCRE1150	110	50	16		
SCRE1163	110	63	16		40
SCRE1175	110	75	16		40
SCRE1190	110	90	16		40
SCRE1263	125	63	16		25
SCRE1275	125	75	16		25
SCRE1290	125	90	16		25
SCRE1211	125	110	16		25
SCRE1463	140	63	16		35
SCRE1475	140	75	16		35
SCRE1490	140	90	16		35.0
SCRE1411	140	110	16		33
SCRE1412	140	125	16		25
SCRE1690	160	90	16		12
SCRE1611	160	110	16		15
SCRE1614	160	140	16		15
SCRE2016	200	160	16		12
SCRE2220	225	200	16		6
SCRE2520	250	200	16		6
SCRE2522	250	225	16		6
SCRE2525	280	250	16		2
SCRE3128	315	280	16		2
SCRE3528	355	280	16		1
SCRE3531	355	315	16		1
SCRE4028	400	280	16		1
SCRE4031	400	315	16		1
SCRE4035	400	355	16		1

# UH-PVC FEMALE THREADED REDUCER



Kod/Code:	Çap/ Dia ( mm )	d-Rp Inch	Basınç/PN	DN ( mm )	Ambalaj Adedi/ Packing Qty
FTRE2512	25	1/2"	16		1200
FTRE3212	32	1/2"	16		600
FTRE4034	40	3/4"	16		300
FTRE401	40	1"	16		300
FTRE501	50	1"	16		200
FTRE50114	50	1 1/4"	16		200
FTRE631	63	1"	16		100
FTRE63112	63	1 1/2"	16		100
FTRE75112	75	1 1/2"	16		30
FTRE752	75	2"	16		30.0
FTRE902	90	2"	16		65
FTRE90212	90	2 1/2"	16		65
FTRE112	110	2"	16		75
FTRE11212	110	2 1/2"	16		75
FTRE113	110	3"	16		75

# UH-PVC SOLVENT CEMENT CONICAL REDUCER



Kod/Code:	Çap/ Dia ( mm ) 1	Çap/ Dia ( mm ) 2	Basınç/PN	DN ( mm )	Ambalaj Adedi/ Packing Qty
SCCRE1611	160	110	16		12
SCCRE2211	225	110	16		3
SCCRE2216	225	160	16		3
SCCRE4025	400	250	16		1
SCCRE4035	400	355	16		1

# UH-PVC SOLVENT CEMENT EXCENTRIC REDUCER



Kod/Code:	Çap/ Dia ( mm )	d-Rp Inch	Basınç/PN	DN ( mm )	Ambalaj Adedi/ Packing Qty
SCEXRE2520	250	200	16		2
SCEXRE2522	250	225	16		2

# UH-PVC SOLVENT CEMENT END CAP



Kod/Code:	Çap/ Dia ( mm )	d-Rp Inch	Basınç/PN	DN ( mm )	Ambalaj Adedi/ Packing Qty
SCEC20	20		16	15	700
SCEC25	25		16	20	600
SCEC32	32		16	25	350
SCEC40	40		16	32	250
SCEC50	50		16	40	100
SCEC63	63		16	50	100
SCEC75	75		16	65	60
SCEC90	90		16	80	35
SCEC11	110		16	100	25
SCEC12	125		16	110	15
SCEC14	140		16	125	10
SCEC16	160		16	150	8
SCEC20	200		16	175	8
SCEC22	225		16	200	6
SCEC25	250		10	250	2
SCEC28	280		10	250	2
SCEC31	315		10	300	1
SCEC35	355		10	350	1
SCEC40	400		10	400	1
SCEC45	450		10	-	1
SCEC50	500		10	-	1

# UH-PVC FEMALE THREADED CAP



Kod/Code:	Çap/ Dia ( mm )	d-Rp Inch	Basınç/PN	DN ( mm )	Ambalaj Adedi/ Packing Qty
FTC20	20	1 1/2"	16	15	700
FTC25	25	3/4"	16	20	600
FTC32	32	1"	16	25	250
FTC40	40	1 1/4"	16	32	150
FTC50	50	1 1/2"	16	40	210
FTC63	63	2"	16	50	100
FTC75	75	2 1/2"	16	65	60
FTC90	90	3"	16	80	35
FTC11	110	4"	16	100	25

# UH-PVC SOLVENT CEMENT THREADED PLUG



Kod/Code:	Çap/ Dia ( mm )	d-Rp Inch	Basınç/PN	DN ( mm )	Ambalaj Adedi/ Packing Qty
SCTP2		2"	16	75	100
SCTP212		2 1/2"	16	90	60
SCTP4		4"	16	110	30

# UH-PVC SOLVENT CEMENT FLANGE ADAPTOR



Kod/Code:	Çap/ Dia ( mm )	d-Rp Inch	Basınç/PN	DN ( mm )	Ambalaj Adedi/ Packing Qty
SCFA16	16		16	12	600
SCFA20	20		16	15	750
SCFA25	25		16	20	450
SCFA32	32		16	25	250
SCFA40	40		16	32	150
SCFA50	50		16	40	160
SCFA63	63		16	50	100
SCFA75	75		16	65	70
SCFA90	90		16	80	85
SCFA11	110		16	100	45
SCFA12	125		16	110	24
SCFA14	140		16	125	18
SCFA16	160		16	150	16
SCFA20	200		16	175	7
SCFA22	225		16	200	3
SCFA25	250		10	250	4
SCFA28	280		10	250	2
SCFA31	315		10	300	2
SCFA35	355		10	350	1
SCFA40	400		4	400.0	1
SCFA45	450		4	-	1
SCFA50	500		4	-	1

# UH-PVC FEMALE THREADED FLANGE ADAPTOR



Kod/Code:	Çap/ Dia ( mm )	d-Rp Inch	Basınç/PN	DN ( mm )	Ambalaj Adedi/ Packing Qty
FTFA38		3/8"	16	12	600
FTFA13		1/2"	16	15	750
FTFA34		3/4"	16	20	450
FTFA1		1"	16	25	250
FTFA114		1 1/4"	16	32	150
FTFA112		1 1/2"	16	40	160
FTFA2		2"	16	50	100
FTFA212		2 1/2"	16	65	60
FTFA3		3"	16	80	85
FTFA4		4"	16	100	45.0

# UH-PVC MALE THREADED FLANGE ADAPTOR



Kod/Code:	Çap/ Dia ( mm )	d-Rp Inch	Basınç/PN	DN ( mm )	Ambalaj Adedi/ Packing Qty
MTFA50	50	1 1/2"	16		50
MTFA63	63	2"	16		25
MTFA63112	63	1 1/2"	16		25

# UH-PVC SOLVENT CEMENT FLANGE SOCKET



Kod/Code:	Çap/ Dia ( mm )	d-Rp Inch	Basınç/PN	DN ( mm )	Ambalaj Adedi/ Packing Qty
SCFC20	20		16	15	
SCFC25	25		16	20	
SCFC32	32		16	25	
SCFC40	40		16	32	
SCFC50	50		16	40	
SCFC63	63		16	50	
SCFC75	75		16	65	
SCFC90	90		16	80	
SCFC11	110		16	100	10
SCFC12	125		16	110	8
SCFC14	140		16	125	8
SCFC16	160		16	150	12
SCFC20	200		16	175	

# UH-PVC SOLVENT CEMENT FLANGE



Kod/Code:	Çap/ Dia ( mm )	d-Rp Inch	Basınç/PN	DN ( mm )	Ambalaj Adedi/ Packing Qty
SOCEF20	20	1/2"	16	15	150
SOCEF25	25	3/4"	16	20	100
SOCEF32	32	1"	16	25	80
SOCEF40	40	1 1/4"	16	32	50
SOCEF50	50	1 1/2"	16	40	48
SOCEF63	63	2"	16	50	25
SOCEF75	75	2 1/2"	16	65	40
SOCEF90	90	3"	16	80	35
SOCEF11	110	4"	16	100	22
SOCEF12	125	4 1/2"	16	110.0	18
SOCEF14	140	5"	16	125	18
SOCEF16	160	6"	16	150	14
SOCEF20	200	7"	16	175	8
SOCEF22	225	8"	16	200	8
SOCEF25	250	9"	16	250	7
SOCEF28	280	10"	10	250	7
SOCEF31	315	12"	10	300	7
SOCEF35	355	14"	10	350.0	1
SOCEF40	400	16"	10	400	1
SOCEF45	450	-	10	-	1
SOCEF50	500	-	10	-	1

# UH-PVC REPAIR FLANGE



Kod/Code:	Çap/ Dia ( mm )	d-Rp Inch	Basınç/PN	DN ( mm )	Ambalaj Adedi/ Packing Qty
PRF90	90		10		35
PRF110	110		10		22
PRF125	125		10		18
PRF140	140		10		18
PRF160	160		10		14
PRF200	200		10		11

# UH-PVC SOLVENT CEMENT BLIND FLANGE



Kod/Code:	Çap/ Dia ( mm )	d-Rp Inch	Basınç/PN	DN ( mm )	Ambalaj Adedi/ Packing Qty
PSCBF20	20	1/2"	16	15	149
PSCBF25	25	3/4"	16	20	110
PSCBF32	32	1"	16	25	80
PSCBF40	40	1 1/4"	16	32	50
PSCBF50	50	1 1/2"	16	40	48
PSCBF63	63	2"	16	50	25
PSCBF75	75	2 1/2"	16	65	16
PSCBF90	90	3"	16	80	14
PSCBF110	110	4"	16	100	11
PSCBF125	125	4 1/2"	16	110	18
PSCBF140	140	5"	16	125	1
PSCBF160	160	6"	16	150	18
PSCBF200	200	7"	16	175	14
PSCBF225	225	8"	16	200	8
PSCBF250	250	9"	16	250	8
PSCBF280	280	10"	10	250	8
PSCBF315	315	12"	10	300	7
PSCBF355	355	14"	10	350	7
PSCBF400	400	16"	10	400	7
PSCBF450	450	-	10	-	7
PSCBF500	500	-	10	-	7

# UH-PVC SOLVENT CEMENT FLANGE SET



Kod/Code:	Çap/ Dia ( mm )	d-Rp Inch	Basınç/PN	DN ( mm )	Ambalaj Adedi/ Packing Qty
SCFLS20	20	1/2"	16	15	16
SCFLS25	25	3/4"	16	20	16
SCFLS32	32	1"	16	25	16
SCFLS40	40	1 1/4"	16	32	16
SCFLS50	50	1 1/2"	16	40	16
SCFLS63	63	2"	16	50	1
SCFLS75	75	2 1/2"	16	65	1
SCFLS90	90	3"	16	80	1
SCFLS110	110	4"	16	100	1
SCFLS125	125	4 1/2"	16	110	1
SCFLS140	140	5"	16	125	1
SCFLS160	160	6"	16	150	1
SCFLS200	200	7"	16	175	1
SCFLS225	225	8"	10	200	1
SCFLS250	250	9"	10	250	1
SCFLS280	280	10"	10	250	1
SCFLS315	315	12"	10	300	1
SCFLS355	355	14"	10	350	1
SCFLS400	400	16"	10	400	1
SCFLS450	450	-	10	-	1
SCFLS500	500	-	10	-	1

# UH-PVC SOLVENT CEMENT WALL CROSS FLANGE



Kod/Code:	Çap/ Dia ( mm )	d-Rp Inch	Basınc/PN	DN ( mm )	Ambalaj Adedi/ Packing Qty
SCWCF50	50	1 1/2"	16	40	200
SCWCF63	63	2"	16	50	125
SCWCF75	75	2 1/2"	16	65	90
SCWCF90	90	3"	16	80	100
SCWCF11	110	4"	16	100	80
SCWCF12	125	4 1/2"	16	110	35
SCWCF14	140	5"	16	125	33
SCWCF16	160	6"	16	150	50
SCWCF20	200	7"	16	175	25
SCWCF22	225	7"	10	200	10
SCWCF25	250	8"	10	250	7
SCWCF28	280	9"	10	250	6
SCWCF31	315	10"	10	300	5
SCWCF35	355	12"	10	350	5
SCWCF40	400	14"	10	400	5

## UH-PVC MALE THREADED NUT



Kod/Code:	Çap/ Dia ( mm )	d-Rp Inch	Basınc/PN	DN ( mm )	Ambalaj Adedi/ Packing Qty
MTN12		1/2"	16		400
MTN34		3/4"	16		400
MTN1		1"	16		240
MTN114		1 1/4"	16		300
MTN112		1 1/2"	16		150
MTN2		2"	16		140
MTN212		2 1/2"	16		25
MTN3		3"	16		20
MTN4		4"	16		2

## UH-PVC MALE THREADED PIECE



Kod/Code:	Çap/ Dia ( mm )	d-Rp Inch	Basınc/PN	DN ( mm )	Ambalaj Adedi/ Packing Qty
MTP12		1/2"	16		400
MTP34		3/4"	16		225
MTP11		1"	16		140
MTP114		1 1/4"	16		150
MTP112		1 1/2"	16		125
MTP2		2"	16		70
MTP212		2 1/2"	16		80
MTP3		3"	16		40
MTP4		4"	10		30



# UH-PVC SOLVENT CEMENT TYP-B MALE THREADED TANK ADAPTOR (Long Type)



Kod/Code:	Çap/ Dia (mm)	d-Rp Inch	Basınç/PN	DN (mm)	Ambalaj Adedi/ Packing Qty
SCLT12		1/2"	10		20
SCLT34		3/4"	10		10
SCLT1		1"	10		40
SCLT114		1 1/4"	10		50
SCLT112		1 1/2"	10		50
SCLT1121		1 1/2"	10		50
SCLT2		2"	10		20
SCLT212		2 1/2"	10		5
SCLT3		3"	10		10
SCLT4		4"	10		12
SCLT412		4 1/2"	10		1
SCLT5		5"	10		4
SCLT6		6"	10		2
SCLT7		7"	10		1

## U-PVC TANK ADAPTOR EPDM RUBBER FLAT GASKET



Kod/Code:	Çap/ Dia (mm)	d-Rp Inch	Basınç/PN	DN (mm)	Ambalaj Adedi/ Packing Qty
ERFG20	20				100
ERFG25	25				100
ERFG32	32				100
ERFG40	40				100
ERFG50	50				100
ERFG63	63				100
ERFG75	75				100
ERFG90	90				100
ERFG11	110				100

## EPDM RUBBER FLAT GASKET



Kod/Code:	Çap/ Dia (mm)	d-Rp Inch	Basınç/PN	DN (mm)	Ambalaj Adedi/ Packing Qty
RFG63	63				50
RFG75	75				50
RFG90	90				50
RFG11	110				50
RFG12	125				50
RFG14	140				50
RFG16	160				50
RFG20	200				20
RFG22	225				20
RFG25	250				20
RFG28	280				20
RFG31	315				20
RFG35	355				20
RFG40	400				20

# CASTANB

[www.castanb.com.tr](http://www.castanb.com.tr)

(+90 232) 999 91 85

   +90 531 851 30 11

 [export.eu@castanb.com.tr](mailto:export.eu@castanb.com.tr)  
[info@castanb.com.tr](mailto:info@castanb.com.tr)

Center office

Mansurođlu Mah. 288/4 Sok No:9/1  
Kat 3. No 43 BAYRAKLI - IZMIR / TURKIYE